

Part I: EAR TRAINING *problems 1-20*
Each example will be played twice. *1.5 pts each*

Section A: Are the sounds you hear high or low? Circle the correct answer.

- 1. High Low
- 2. High Low
- 3. High Low
- 4. High Low
- 5. High Low

Section B: Are the sounds you hear going up, going down, or staying the same? Circle the correct answer.

- 6. Up Down Same
- 7. Up Down Same
- 8. Up Down Same
- 9. Up Down Same
- 10. Up Down Same

Section C: Are the chords you hear Major or minor? Circle the correct answer.

- 11. Major minor
- 12. Major minor
- 13. Major minor
- 14. Major minor
- 15. Major minor

Section D: Which rhythm do you hear? Circle A or B.

16. A B

17. A B

18. A B

19. A B

20. A B

2

Part II: WRITTEN

Section E: Name these notes in the blanks below the notes. Use capital letters. *1 pt each*

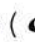
B *E* *D* *G* *C*

E *A* *D* *C* *F*

Section F: Identify these intervals by NUMBER only, as 2, 3, 4, 5, 6, 7, or 8 (octave). *1 pt each*

3 *5* *2* *4* *6*

6 *3* *7* *8* *4*

Section G: Draw whole notes () on the given line or space.

1 pt each Space F Line F Space C Line B Space A

*(octave)
OK*

Section H: Circle the correct name of each Major key signature. *1 pt each*

C Major C Major C Major

G Major G Major G Major

F Major F Major F Major

Section I: Add the missing bar lines. *1 pt each bar line*

Section J: Write the missing time signature in its correct place on the staff. *deduct 3 points if top number incorrect*

5 pts

deduct 2 points if bottom number incorrect

5 pts

Section K: Complete each measure by drawing one note under each arrow. *1 pt each note*
Be sure the note value completes the measure.

Section L: Circle the name of the type of note or rest pictured. *2 pts each*

Quarter note Half rest Quarter note Quarter note

Half note Quarter rest Whole note Whole note

Section M: Match terms to their definitions. Print carefully using CAPITAL LETTERS. *1 pt each*

C Legato

A. Loud

A *f*

B. Soft

D Staccato

C. Smooth and connected

E Tempo

D. Short and separated

B *p*

E. Speed

H Adagio

F. Indicates to repeat a section

F

G. A fast tempo

G Allegro

H. A slow tempo

K

I. Gradually getting louder

J

J. Gradually getting softer

I

K. Hold or pause

Part I: EAR TRAINING *Problems 1-20*
Each example will be played twice. *1.5 points each*

Section A: Are the sounds you hear high or low? Circle the correct answer.

- 1. High Low
- 2. High Low
- 3. High Low
- 4. High Low
- 5. High Low

Section B: Are the sounds you hear going up, going down, or staying the same? Circle the correct answer.

- 6. Up Down Same
- 7. Up Down Same
- 8. Up Down Same
- 9. Up Down Same
- 10. Up Down Same

Section C: Are the chords you hear Major or minor? Circle the correct answer.

- 11. Major minor
- 12. Major minor
- 13. Major minor
- 14. Major minor
- 15. Major minor

Section D: Which rhythm do you hear? Circle A or B.

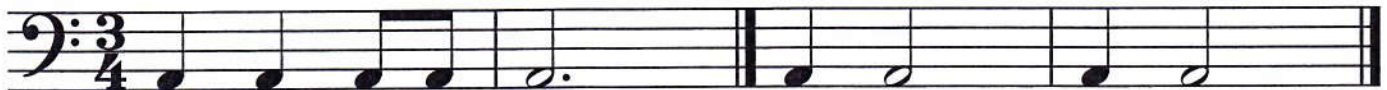
16. A

B



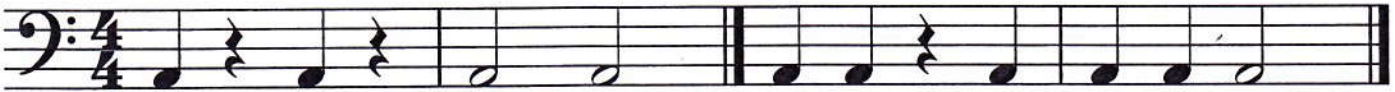
17. A

B



18. A

B



19. A

B



20. A

B



2

Part II: WRITTEN

Section E: Name these notes in the blanks below the notes. Use capital letters. *1 pt each*

D G F B E

G C F E A

Section F: Identify these intervals by NUMBER only, as 2, 3, 4, 5, 6, 7, or 8 (octave). *1 pt each*

2 5 2 4 6

6 3 7 8 4

Section G: Draw whole notes () on the given line or space.

*(octave)
OK*

1 pt each

Space A

Line A

Space E

Line D

Space C

Section H: Circle the correct name of each Major key signature. *1 pt each*

C Major

G Major

F Major

C Major

G Major

F Major

C Major

G Major

F Major

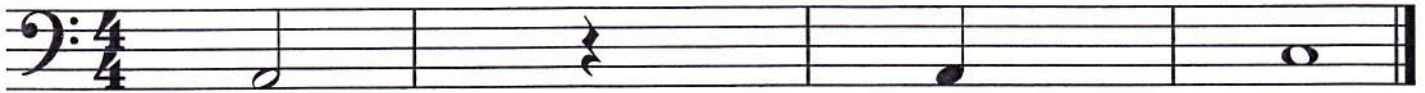
Section I: Add the missing bar lines. *1 pt each bar line*

Section J: Write the missing time signature in its correct place on the staff. *5 points each example*

*Top number: 3 points
Bottom number: 2 points*

Section K: Complete each measure by drawing one note under each arrow. *1 pt each note*
Be sure the note value completes the measure.

Section L: Circle the name of the type of note or rest pictured. *2 pts each*



Quarter note

Half note

Half rest

Quarter rest

Quarter note

Whole note

Quarter note

Whole note

Section M: Match terms to their definitions. Print carefully using CAPITAL LETTERS. *1 pt each*

C Legato

A. Loud

A *f*

B. Soft

C Staccato

C. Smooth and connected

E Tempo

D. Short and separated

B *p*

E. Speed

H Adagio

F. Indicates to repeat a section

F

G. A fast tempo

G Allegro

H. A slow tempo

K

I. Gradually getting louder

J

J. Gradually getting softer

I

K. Hold or pause

Part I: EAR TRAINING *problems 1-20*
Each example will be played twice. *1.5 each*

Section A: Are the sounds you hear high or low? Circle the correct answer.

- 1. High Low
- 2. High Low
- 3. High Low
- 4. High Low
- 5. High Low

Section B: Are the sounds you hear going up, going down, or staying the same? Circle the correct answer.

- 6. Up Down Same
- 7. Up Down Same
- 8. Up Down Same
- 9. Up Down Same
- 10. Up Down Same

Section C: Are the chords you hear Major or minor? Circle the correct answer.

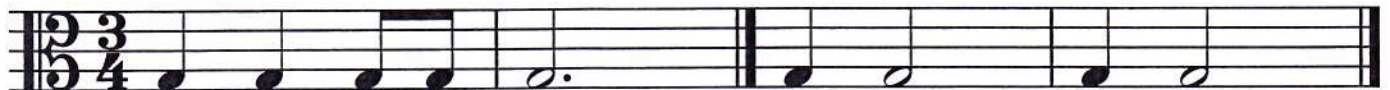
- 11. Major minor
- 12. Major minor
- 13. Major minor
- 14. Major minor
- 15. Major minor

Section D: Which rhythm do you hear? Circle A or B.

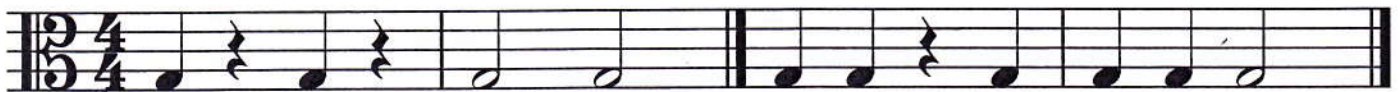
16. A B



17. A B



18. A B



19. A B




20. A B



Part II: WRITTEN

Section E: Name these notes in the blanks below the notes. Use capital letters. *1 pt each*




C F E A D

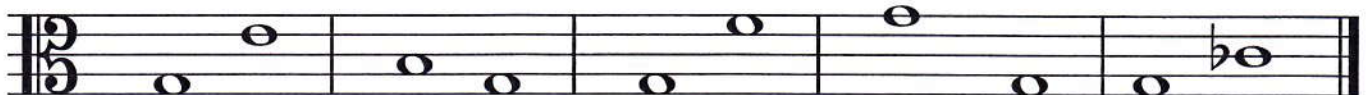


F B E D G

Section F: Identify these intervals by NUMBER only, as 2, 3, 4, 5, 6, 7, or 8 (octave). *1 pt each*



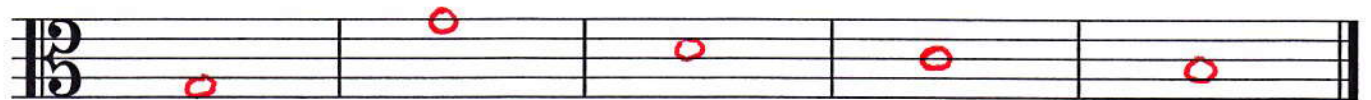
3 5 2 4 6



6 3 7 8 4

*(octave)
OK*

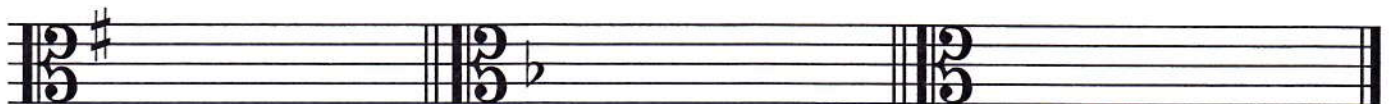
Section G: Draw whole notes (o) on the given line or space.



1 pt each

Space G Line G Space D Line C Space B

Section H: Circle the correct name of each Major key signature. *1 pt each*



C Major

G Major

F Major

C Major

G Major

F Major

C Major

G Major

F Major

Section I: Add the missing bar lines. *1 point each bar line*

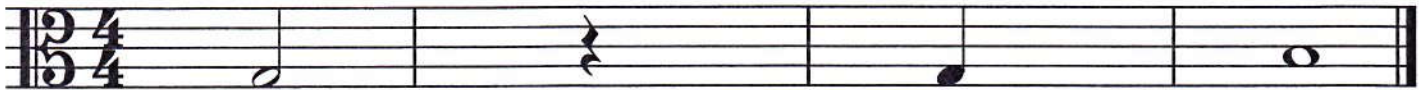
Section J: Write the missing time signature in its correct place on the staff. *5 points each example.*

*Top number: 3 points
Bottom number: 2 points*

Section K: Complete each measure by drawing one note under each arrow. *1 pt each note*
Be sure the note value completes the measure.

Section L: Circle the name of the type of note or rest pictured.

2 pts each



Quarter note

Half note

Half rest

Quarter rest

Quarter note

Whole note

Quarter note

Whole note

Section M: Match terms to their definitions. Print carefully using CAPITAL LETTERS.

1 pt each

C Legato

A. Loud

A *f*

B. Soft

D Staccato

C. Smooth and connected

E Tempo

D. Short and separated

B *p*

E. Speed

H Adagio

F. Indicates to repeat a section

F

G. A fast tempo

G Allegro

H. A slow tempo

K

I. Gradually getting louder

J

J. Gradually getting softer

I

K. Hold or pause

PART I: EAR TRAINING

Each example will be played twice.

Sections A-E
1 pt ea
15 pts. Total

Section A: Circle the interval that you hear.

- 1. 2nd 3rd 4th 5th
- 2. 2nd 3rd 4th 5th
- 3. 2nd 3rd 4th 5th

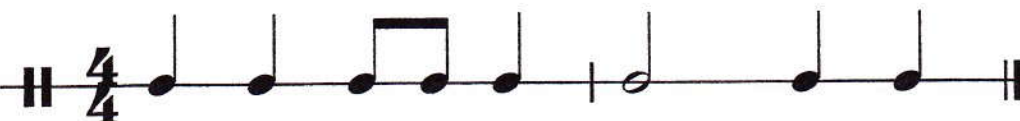
Section B: Is the chord that you hear Major or minor? Circle the correct answer.


- 1. Major minor
- 2. Major minor
- 3. Major minor

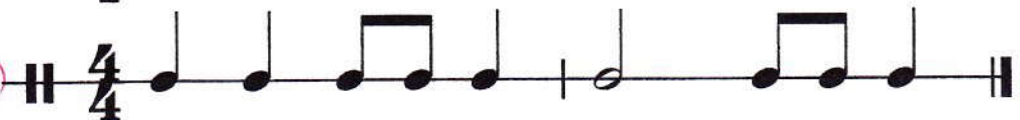
Section C: Is the example that you hear in 3/4 or 4/4 time signature? Circle the correct answer.


- 1. 3/4 4/4
- 2. 3/4 4/4
- 3. 3/4 4/4

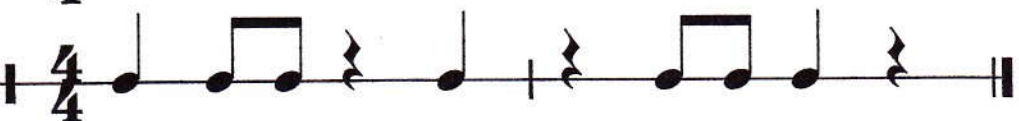
Section D: Which rhythm do you hear? Circle A, B, or C.

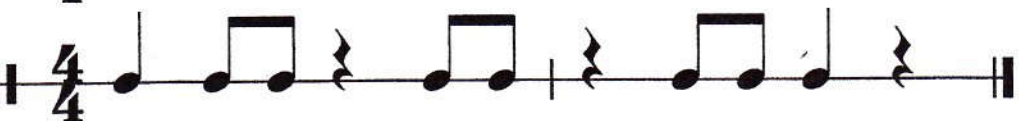
1. A 

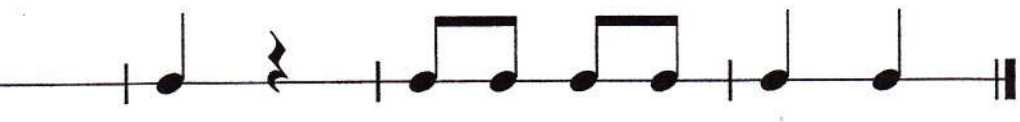
B 

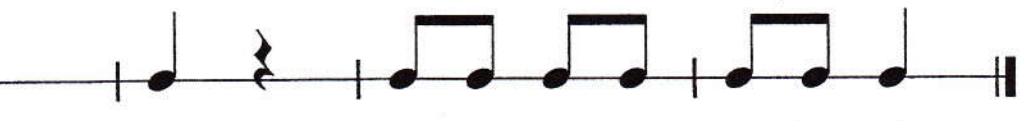
C 

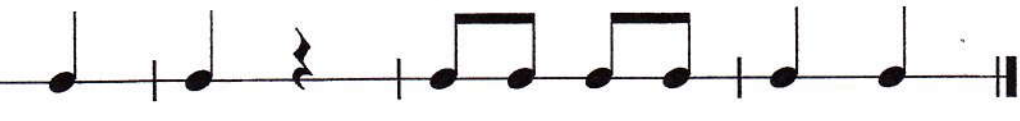
2. A 

B 

C 

3. A 

B 

C 

2

Section E: Do the melodies you hear skip up, skip down, step up, step down, or repeat? Circle the correct answer.

- 1. Skip up Skip down Step up Step down Repeat
- 2. Skip up Skip down Step up Step down Repeat
- 3. Skip up Skip down Step up Step down Repeat

PART II: WRITTEN

10 pts

Section F: Draw the following scales using accidentals. Use whole notes. Do not use key signatures. Instead, place the sharps or flats on the correct side of the notes that need them.

1/2 pt ea correct or incorrect accidental

D Major

A musical staff in treble clef showing the D major scale with whole notes. The notes are D, E, F#, G, A, B, C#, D. Handwritten red sharps are placed above the F and C notes.

A_b Major

A musical staff in bass clef showing the A-flat major scale with whole notes. The notes are A_b, B_b, C, D_b, E_b, F, G, A_b. Handwritten red flats are placed below the A, B, D, E, and A notes.

B_b Major

A musical staff in bass clef showing the B-flat major scale with whole notes. The notes are B_b, C, D, E, F, G, A, B_b. Handwritten red flats are placed below the B and B notes.

10 pts

Section G: Write in the names of these notes in the blanks below.

1 pt ea

A musical staff in grand staff (treble and bass clefs) with ten whole notes. The notes are: B_b (treble), D (treble), F# (treble), G (bass), C (bass), G_b (bass), A (treble), B (treble), G (treble).

- B_b D E F# G C G_b A B G

10 pts

Section H: Draw stems in the correct direction and on the correct side of each of the notes.

1/2 pt stem direction 1/2 pt correct side

10 pts

Section I: Identify the parts of the grand staff by writing the correct letter in each of the boxes. Use CAPITAL LETTERS.

1 pt ea

- A. Treble Clef Sign
- B. Bass Clef Sign
- C. Treble Staff
- D. Bass staff
- E. Barline
- F. Brace
- G. Ending Barline
- H. Half Note
- I. Quarter Note
- J. Whole Note

5 pts

Section J: Draw an enharmonic note beside each of the following notes. Use whole notes.

1 pt ea

10 pts

Section K: Draw the missing barlines. End each line with an ending barline.

1 pt ea

1 pt
1/3 pt ea

4

8 pts

Section L: Draw the following intervals above or below the given note as indicated. Use whole notes. You may draw either harmonic or melodic intervals.

1/2 pt ea

5th above 2nd above 3rd below 6th below 4th above 7th below 3rd above Octave above

6 pts

Section M: Name the following Major key signatures.

1/2 pt ea

B^b A F G A^b E

5 pts

Section N: Draw the indicated whole or half step above or below the given note. Use whole notes.

1 pt ea

Whole step above Half step below Whole step below Whole step above Half step above

2 pts

Section O: Write the order of sharps and flats.

1 pt ea

SHARPS: F C G D A E B


FLATS: B E A D G C F

Test error - No deductions for #5 or #11

8 pts

Section P: Match the following terms and symbols with their definitions. Use CAPITAL LETTERS.

1/2 pt ea

1. G 

2. M D.S. al Fine

3. B Tie

4. P A half step

5. E A slow speed

6. K Ritardando

7. T 

8. S 

9. Q Slur

10. F 8va

11. O ^{fast} A slow tempo

12. C D.C. al Fine

13. A A Tempo

14. R 

15. J Short & separated

16. I Tempo

A. Return to the original speed



C. Repeat from the beginning to the Fine

D. The distance from B up to C#

E. Adagio

F. Indicates to play notes an octave higher

G. Natural sign

H. Accent sign

I. Speed

J. Staccato

K. Gradually slowing down

L. Diminuendo

M. Repeat from the sign to the Fine

N. Legato

O. Allegro

P. The distance from B up to C

Q. Play legato

R. Sharp sign

S. Hold or pause

T. Crescendo

PART II: WRITTEN

1 ea. Section E: Name the following key signatures.

D Major A^b Major F Major C minor F[#] minor B minor

Section F: Add accidentals on the correct side of the following notes to form the scales indicated.

8 ea. - 1/2 note

Section G: Write the order of sharps and flats in the following clefs. If done correctly, the staves will show the key signatures of C[#] and C^b Major.

$\frac{1}{2}$ pt. per accidental

Section H: Name the root of each of the following triads.

1 ea.

Section I: Write the following triads in root position.

2 ea. - 1 = notes

1 = quality

$\frac{1}{2}$ if just 1 accidental wrong

E^b: I

B: V

A: IV

D: V

Section J: Rewrite the following melody on the bass clef, beginning two octaves lower than the example. Don't forget to include all the barlines.

Prelude, Op. 28, No. 7 (excerpt)
Chopin

-1 per barline / - $\frac{1}{2}$ stem direction / - $\frac{1}{2}$ per note + - $\frac{1}{2}$ per rhythm / -5 if wrong octave / - $\frac{1}{2}$ if last barline is double but not final

Section K: Write the following intervals above or below the given note.

1 ea.

2nd below 5th below 4th above 8th above 6th above

Section L: Identify the following intervals by writing the number of the interval and circling its quality.

M = Major
m = minor
P = Perfect

1 per number
1 per quality

8 3 6 2 3
M m **P** M **m** P **M** m P **M** m P **M** m P

2 ea.

7 5 4 7 2
M **m** P M m **P** M m **P** **M** m P M **m** P

Section M: Given these Major key signatures, identify the root-position triads with Roman numerals. Remember to use uppercase for Major triads and lowercase for minor triads.

1 ea. - $\frac{1}{2}$ if wrong case

V ii iii IV vi

- $\frac{1}{2}$ for "II m"

4

Section N: Complete these measures by adding one note to each measure, under the arrows. You should add four (4) notes total. Note that there are four (4) different time signatures.

1 ea.

Section O: Circle whether the following cadences are authentic or half.

2 ea.

1 ea.

Section P: Match these terms and definitions. Print your answers carefully using CAPITAL LETTERS.

-2 if lowercase

1. E <

2. N :||

3. B *f*

4. K >

5. H

6. I Tempo

7. L *8va*

8. C A tempo

9. M Diminuendo

10. O *mf*

11. A Andante

12. G Largo

13. D Molto

14. J Pianissimo

15. F Poco

A. Moderate or walking speed

B. Loud

C. Return to the original speed or tempo

D. Much

E. Gradually getting louder

F. Little

G. Very slow

H. Slur

I. Speed

J. Very soft

K. Accent

L. Indicates to play notes an octave higher

M. Gradually getting softer; decrescendo

N. Indicates to repeat a section

O. Moderately loud

PART I: EAR TRAINING
Each example will be played twice.

Section A: Identify the interval that you hear by both quality and number.

1. P4 5. m6
2. M7 6. m2
3. m3 7. P5
4. TT 8. P8

1 ea.

↑ Preferred answer, not A4 or d5 - see curriculum.

Section B: Circle the scale that you hear.

M = Major Hm = Harmonic minor
Nm = Natural minor Mm = Melodic minor

1. M Nm Hm Mm
2. M Nm Hm Mm
3. M Nm Hm Mm
4. M Nm Hm Mm
5. M Nm Hm Mm

1 ea.

Section C: Circle the letter (A, B, or C) of the rhythm that you hear.

1. 2 ea. **A**

B

C

2. **A**

B

C

Section G: Each question has 3 parts: 1) key signature, 2) name of major key, and 3) name of its relative minor key. You will be given one of the 3 parts: fill in the 2 that are missing.

1 per answer = 10 total

G \flat E A C \flat D
 e \flat c \sharp f \sharp a \flat b

Section H: Add accidentals to the following notes to form the 4 scales indicated. *1/2 per note*

F \sharp harmonic minor

A \flat Major

A melodic minor

B Major

Section I: Identify the following cadences as Authentic, Half, Plagal, or Deceptive. *1 ea.*

H D [Does Not Count] A H

Section J: Draw a whole note below the given note to complete the interval.

1 ea.
-1/2 if wrong accidental

M7 m3 m6 m2 P5

Section K: Identify the following intervals by both quality and number.

*2 ea. → 1/quality
If number is wrong,
all wrong.*

D3 P8 PU/P1 A4 m7

Example

Section L: Circle the quality of the following triads. If the triad is none of the qualities, circle "Other."

- M = Major
- m = minor
- + = Augmented
- ° = diminished

1 ea.

M m M m M m M m M m M m
+ ° + ° + ° + ° + ° + °
Other Other Other Other Other Other

Section M: Transpose the following excerpt from F minor down to D minor.

*1 ea. - k.s. & t.s. 1 ea. note or rest = 1/2 pitch
- 1/2 ea. stem direction 1/4 1/2 rhythm.*

20 total/max.

Section N: Write the beat note (single beat) in the staff for the following time signatures. *1 ea.*

*or ♩
For compound meter, please refer to the curriculum.*

See:

Section O: Match these terms and definitions.

Print your answers carefully using CAPITAL LETTERS. *-2 if lowercase*

- | | |
|--------------------------|--|
| 1. <u>C</u> D.C. al Fine | A. Not too much |
| 2. <u>H</u> D.S. al Fine | B. Sweetly |
| 3. <u>G</u> Adagio | C. Repeat from the beginning to the Fine |
| 4. <u>J</u> Cantabile | D. In the same manner |
| 5. <u>I</u> AB | E. Lightly |
| 6. <u>B</u> Dolce | F. Heavy, forceful |
| 7. <u>E</u> Leggiero | G. Slow |
| 8. <u>A</u> Non troppo | H. Repeat from the sign to the Fine |
| 9. <u>F</u> Pesante | I. Binary |
| 10. <u>D</u> Simile | J. In a singing manner |

PART I: EAR TRAINING
Each example will be played twice.

ET-14 = 14%
WR-86 = 86%

Section A: (4 pts) Circle the interval you hear.

- 1. m2 **M2** m6 Dim.5
- 2. m3 P8 M6 **m7**
- 3. M3 P5 **Aug.4** m7
- 4. m6 M6 M7 **P4**

Section B: (2 pts) Circle the melody you hear: A, B, or C.

1. **A** 

B 

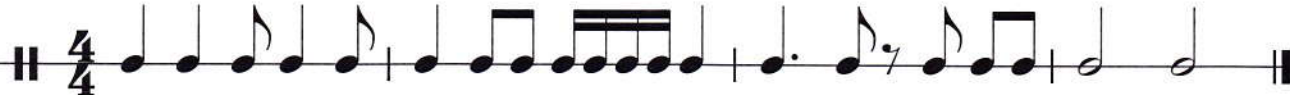
C 

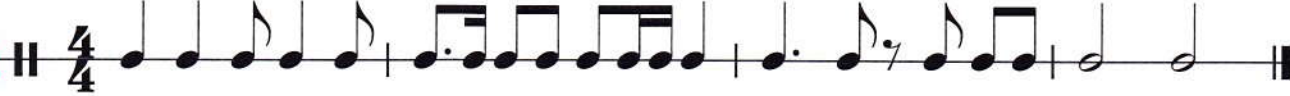
2. A 


B 


C 


Section C: (2 pts) Circle the rhythm you hear: A, B, or C.


1. A 

B  (circled)

C 

2. A 

B 

C  (circled)

Section D (4 pts): Circle the triad you hear.

- | | | | | |
|----|--------------|--------------|-------------------|------------------|
| 1. | Major | Minor | <u>Diminished</u> | Augmented |
| 2. | Major | <u>Minor</u> | Diminished | Augmented |
| 3. | <u>Major</u> | Minor | Diminished | Augmented |
| 4. | Major | Minor | Diminished | <u>Augmented</u> |

Section E (2 pts): Circle the cadence you hear at the end of each phrase.

- | | | | | |
|----|------------------|---------------|------|-----------|
| 1. | Authentic | <u>Plagal</u> | Half | Deceptive |
| 2. | <u>Authentic</u> | Plagal | Half | Deceptive |

Section J: (4 pts) Copy the following melody on the blank staff provided, correcting four mistakes in notation.

#1 - backwards
#2 - misplaced dot
#3 - stem direction
#4 - flag backwards

Norse Song (excerpt)
R. Schumann

Section K: (6 pts) Transpose this melody to the key a major third higher.

Etude (excerpt)
Eduard Schytte

Section L: (3 pts) Identify these intervals by quality (M, m, P, Dim., Aug.) and number.

Section M: (3 pts) Write these intervals down from the given pitch.

Section N: (4 pts) Write the following scales, using individual accidentals.

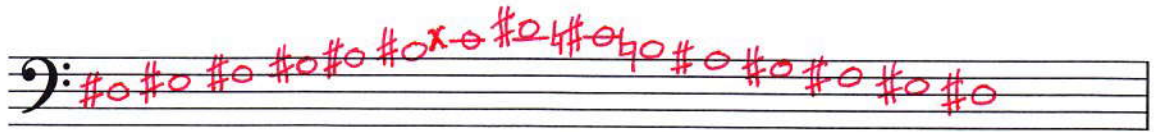
c harmonic minor ascending

B Major ascending

f natural minor ascending



d# melodic minor ascending & descending



Section O: (8 pts) Identify these triads by root name, quality (major, minor, diminished, augmented), and position (root position, first inversion, second inversion).



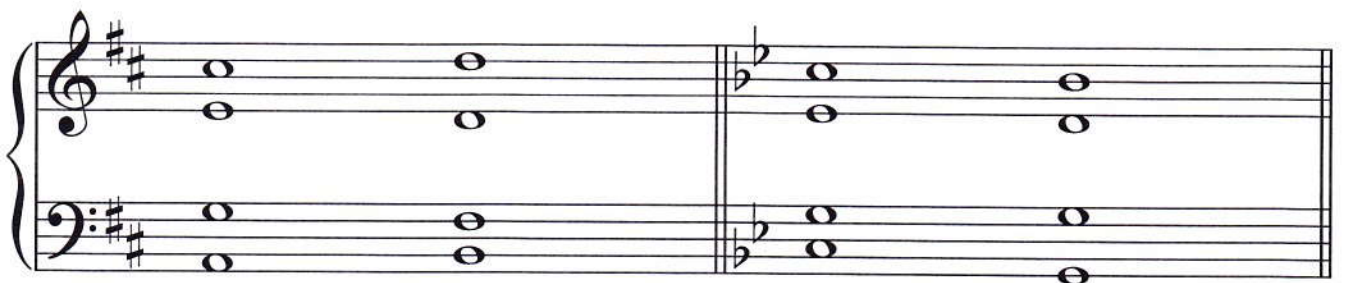
Root and quality: F# b g C#+
 Position: 1st. inv. 2nd. inv. Root pos. 1st. inv.

Section P: (5 pts) Identify the following chords by Roman numeral in the key indicated.



e: Vii°7 a#: VI7 Ab: IV E: vi b: ii°

Section Q: (2 pts) Identify each cadence type.



Cadence type: Deceptive Plagal

Section R: (7 pts) Analyze the following four-part example, identifying the key signature, Roman numerals, and figured bass.

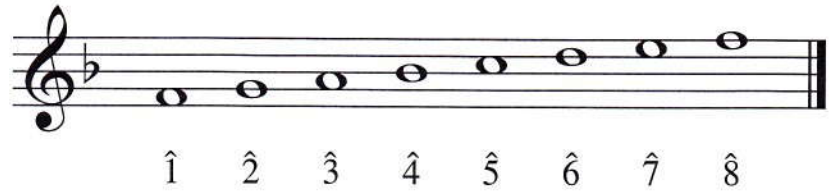
G : (V) I⁶ I V V I V⁷ vi V

I I V₅⁶ I V V I I I I⁶

IV IV IV IV I₄⁶ I₄⁶ I₄⁶ V⁷ I
 (or V₄⁶)

Section S: (7 pts) Write the scale degree name for each note of the scale, beginning with "tonic."

1. Tonic
2. Supertonic
3. Mediant
4. Subdominant
5. Dominant
6. Submediant
7. Leading Tone
8. Tonic



Section T: (10 pts) Match these terms to the correct definitions. Use CAPITAL LETTERS.

- | | |
|-------------------------|---------------------------|
| 1. <u>C</u> Accelerando | A. Lightly |
| 2. <u>M</u> Adagio | B. Gracefully |
| 3. <u>F</u> Coda | C. Gradually grow faster |
| 4. <u>H</u> Con brio | D. Holding Back |
| 5. <u>J</u> Espressivo | E. Suddenly |
| 6. <u>A</u> Leggiero | F. Tail or ending section |
| 7. <u>I</u> Mezzo forte | G. Broadening |
| 8. <u>D</u> Rallentando | H. Brightly |
| 9. <u>L</u> Simile | I. Moderately loud |
| 10. <u>E</u> Subito | J. With expression |
| | K. Heavy, forceful |
| | L. In the same manner |
| | M. Slow |